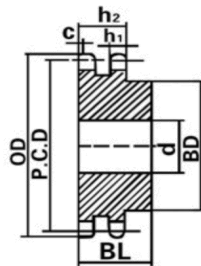
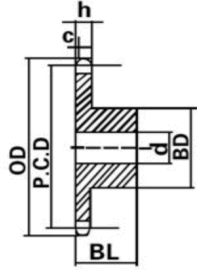
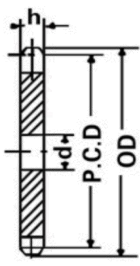


DIN SPROCKET



06B-1-2

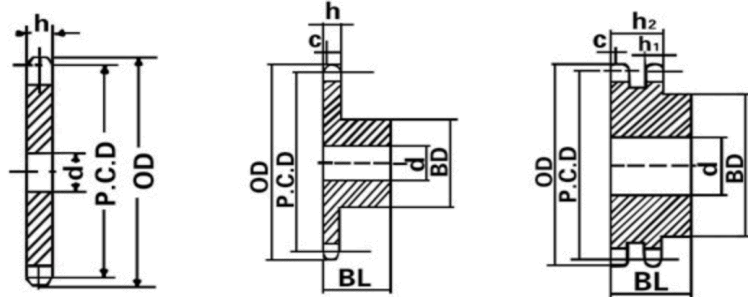
NOTE	mm
Pitch	9.525
Roller Φ	6.35
h	5.3
h1	5.2
h2	15.4

Dimensions: mm

Teeth	OD	Bore:d	Type B Simplex		Type B Duplex		Material	
			Hub		Hub			
			BD	BL	BD	BL		Bore:d
8	28.0	8	15	22	15	22	8	C45
9	31.0	8	18	22	18	22	8	
10	34.0	8	20	22	20	22	8	
11	37.0	8	22	25	22	25	10	
12	40.0	8	25	25	25	25	10	
13	43.0	10	28	25	28	25	10	
14	46.3	10	31	25	31	25	10	
15	49.3	10	34	25	34	25	10	
16	52.3	10	37	28	37	30	12	
17	55.3	10	40	28	40	30	12	
18	58.3	10	43	28	43	30	12	
19	61.3	10	45	28	46	30	12	
20	64.3	10	46	28	49	30	12	
21	68.0	12	48	28	52	30	12	
22	71.0	12	50	28	55	30	12	
23	73.5	12	52	28	58	30	12	
24	77.0	12	54	28	61	30	12	
25	80.0	12	57	28	64	30	12	
26	83.0	12	60	28	67	30	12	
27	86.0	12	60	28	70	30	12	
28	89.0	12	60	28	73	30	12	
29	92.0	12	60	28	76	30	12	
30	94.7	12	60	30	79	30	12	
31	98.3	14	65	30	80	30	16	
32	101.3	14	65	30	80	30	16	
33	104.3	14	65	30	80	30	16	
34	107.3	14	65	30	80	30	16	
35	110.4	14	65	30	80	30	16	
36	113.4	16	70	30	90	30	16	
37	116.4	16	70	30	90	30	16	
38	119.5	16	70	30	90	30	16	
39	122.5	16	70	30	90	30	16	
40	125.5	16	70	30	90	30	16	
42	131.6	16	78	35	88	50	20	
45	140.7	16	78	35	88	50	20	
46	143.7	16	78	35	88	50	20	
48	146.7	16	78	35	88	50	20	
50	155.7	20	78	35	88	50	20	
55	170.8	20	78	35	88	50	20	
57	176.9	20	78	35	88	50	20	
60	186.0	20	78	35	88	50	20	
76	234.9	20	78	35	88	50	25	
95	292.5	25	88	40	108	50	25	

* Plate wheel

DIN SPROCKET



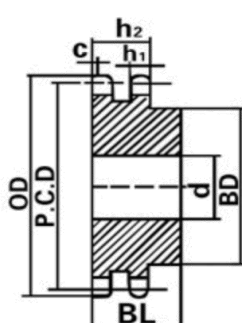
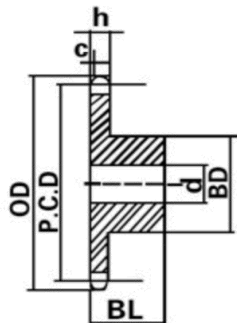
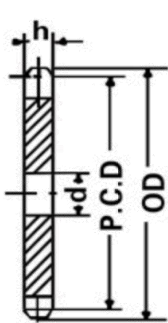
08B-1-2	
NOTE	mm
Pitch	12.7
Roller Φ	8.51
h	7.2
h1	7
h2	21

Dimensions: mm

Teeth	OD	Bore:d	Type B Simplex		Type B Duplex		Material	
			Hub		Hub			
			BD	BL	BD	BL		Bore:d
8	37.2	10	20	25	20	32	10	C45
9	41.0	10	24	25	24	32	10	
10	45.2	10	26	25	28	32	10	
11	48.7	10	29	25	32	35	12	
12	53.0	10	33	28	35	35	12	
13	57.4	10	37	28	38	35	12	
14	61.8	10	41	28	42	35	12	
15	65.5	10	45	28	46	35	12	
16	69.5	12	50	28	50	35	14	
17	73.6	12	52	28	54	35	14	
18	77.8	12	56	28	58	35	14	
19	81.7	12	60	28	62	35	14	
20	85.8	12	64	28	66	35	14	
21	89.7	12	68	28	70	40	16	
22	93.8	12	70	28	70	40	16	
23	98.2	14	70	28	70	40	16	
24	101.8	14	70	28	75	40	16	
25	105.8	14	70	28	80	40	16	
26	110.0	16	70	30	85	40	20	
27	114.0	16	70	30	85	40	20	
28	118.0	16	80	30	90	40	20	
29	122.0	16	80	30	95	40	20	
30	126.1	16	90	30	100	40	20	
31	130.2	16	90	30	100	40	20	
32	134.3	16	90	30	100	40	20	
33	138.4	16	90	30	100	40	20	
34	142.6	16	90	30	100	40	20	
35	146.7	16	90	30	110	40	20	
36	151.0	16	90	35	110	40	20	
37	154.6	16	90	35	110	40	20	
38	158.6	16	90	35	110	40	20	
39	162.7	16	90	35	110	40	20	
40	166.8	20	90	35	108	55	20	
42	175.4	20	88	42	108	55	20	
45	188.0	20	88	42	108	55	20	
46	192.1	20	88	42	108	55	20	
48	200.3	20	88	42	108	55	20	
50	208.3	20	88	42	108	55	20	
55	228.1	20	88	42	108	55	25	
57	236.4	20	88	42	108	55	25	
60	248.6	20	88	42	108	55	25	
76	313.3	25	88	42	108	55	25	
95	390.1	25	108	42	120	55	25	

* Plate wheel

DIN SPROCKET



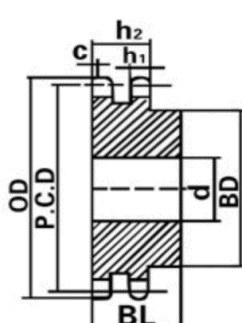
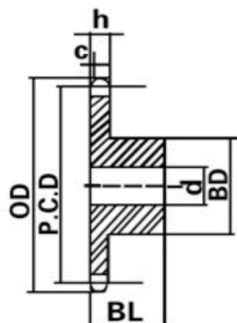
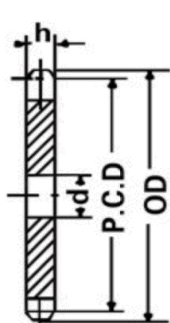
10B-1-2	
NOTE	mm
Pitch	15.875
Roller Φ	10.16
h	9.1
h1	9
h2	25.5

Dimensions: mm

Teeth	OD	Bore:d	Type B Simplex		Type B Duplex		Material	
			Hub		Hub			
			BD	BL	BD	BL		
8	47.0	10	25	25	25	40	12	C45
9	52.6	10	30	25	30	40	12	
10	57.5	10	35	25	35	40	12	
11	63.0	12	37	30	39	40	14	
12	68.0	12	42	30	44	40	14	
13	73.0	12	47	30	49	40	14	
14	78.0	12	52	30	54	40	14	
15	83.0	12	57	30	59	40	14	
16	88.0	12	60	30	64	45	16	
17	93.0	12	60	30	69	45	16	
18	98.3	14	70	30	74	45	16	
19	103.3	14	70	30	79	45	16	
20	108.4	14	75	30	84	45	16	
21	113.4	16	75	30	85	45	16	
22	118.0	16	80	30	90	45	16	
23	123.4	16	80	30	95	45	16	
24	128.3	16	80	30	100	45	16	
25	134.0	16	80	30	105	45	20	
26	139.0	20	85	35	110	45	20	
27	144.0	20	85	35	110	45	20	
28	148.7	20	90	35	115	45	20	
29	153.8	20	90	35	115	45	20	
30	158.8	20	90	35	120	45	20	
31	163.9	20	95	35	120	45	20	
32	168.9	20	95	35	120	45	20	
33	174.5	20	95	35	120	45	20	
34	179.0	20	95	35	120	45	20	
35	184.1	20	95	35	120	45	20	
36	189.1	20	100	35	120	45	20	
37	194.2	20	100	35	120	45	20	
38	199.2	20	100	35	120	45	20	
39	204.2	20	100	35	120	45	20	
40	209.3	20	100	35	120	45	20	
42	219.9	20	108*	43	120*	59	25	
45	235.0	20	108*	43	120*	59	25	
46	240.1	20	108*	43	120*	59	25	
48	250.2	20	108*	43	120*	59	25	
50	260.3	20	108*	43	120*	59	25	
55	285.5	20	108*	43	120*	59	25	
57	296.0	25	108*	43	120*	59	25	
60	310.8	25	108*	43	120*	59	25	
76	392.1	25	108*	43	120*	59	25	
95	488.5	30	108*	59	145*	58	30	

* Plate wheel

DIN SPROCKET



12B-1-2

NOTE	mm
Pitch	19.05
Roller Φ	12.07
h	11.1
h1	10.8
h2	30.3

Dimensions: mm

Teeth	OD	Bore:d	Type B Simplex		Type B Duplex		Material	
			Hub		Hub			
			BD	BL	BD	BL		
8	57.6	12	31	30	31	45	12	C45
9	62.0	12	37	30	37	45	12	
10	69.0	12	42	30	42	45	12	
11	75.0	14	46	35	47	50	16	
12	81.5	14	52	35	53	50	16	
13	87.5	14	58	35	59	50	16	
14	93.6	14	64	35	65	50	16	
15	99.8	14	70	35	71	50	16	
16	105.5	16	75	35	77	50	20	
17	111.5	16	80	35	83	50	20	
18	118.0	16	80	35	89	50	20	
19	124.2	16	80	35	95	50	20	
20	129.7	16	80	35	100	50	20	
21	136.0	20	90	40	100	50	20	
22	141.8	20	90	40	100	50	20	
23	149.0	20	90	40	110	50	20	
24	153.9	20	90	40	110	50	20	
25	160.0	20	90	40	120	50	20	
26	165.9	20	95	40	120	50	20	
27	172.3	20	95	40	120	50	20	
28	178.0	20	95	40	120	50	20	
29	184.1	20	95	40	120	50	20	
30	190.5	20	95	40	120	50	20	
31	196.3	20	100	40	130	50	20	
32	203.3	20	100	40	130	50	20	
33	209.3	20	100	40	130	50	20	
34	214.6	20	100	40	130	50	20	
35	221.0	20	100	40	130	50	20	
36	226.8	20	100	40	130	50	25	
37	232.9	20	100	40	130	50	25	
38	239.0	20	100	40	130	50	25	
39	245.1	20	100	40	130	50	25	
40	251.3	20	100	40	130	62	25	
42	264.5	25	118	61	136	62	25	
45	282.5	25	118	61	136	62	25	
46	287.9	25	118	61	136	62	25	
48	300.1	25	118	61	136	62	25	
50	312.3	25	118	61	136	62	25	
55	342.7	25	118	61	136	62	25	
57	355.4	25	118	61	136	62	25	
60	373.0	25	118	61	136	62	25	
76	469.9	30	118	61	145	63	30	
95	585.1	30	133	62	145	63	30	

* Plate wheel